

Smart Water Meter with Integrated Valve

- Is distance and remote location giving you a hard time monitoring water consumption?
- Is limited access to residential and commercial buildings holding you back from reading the meters?

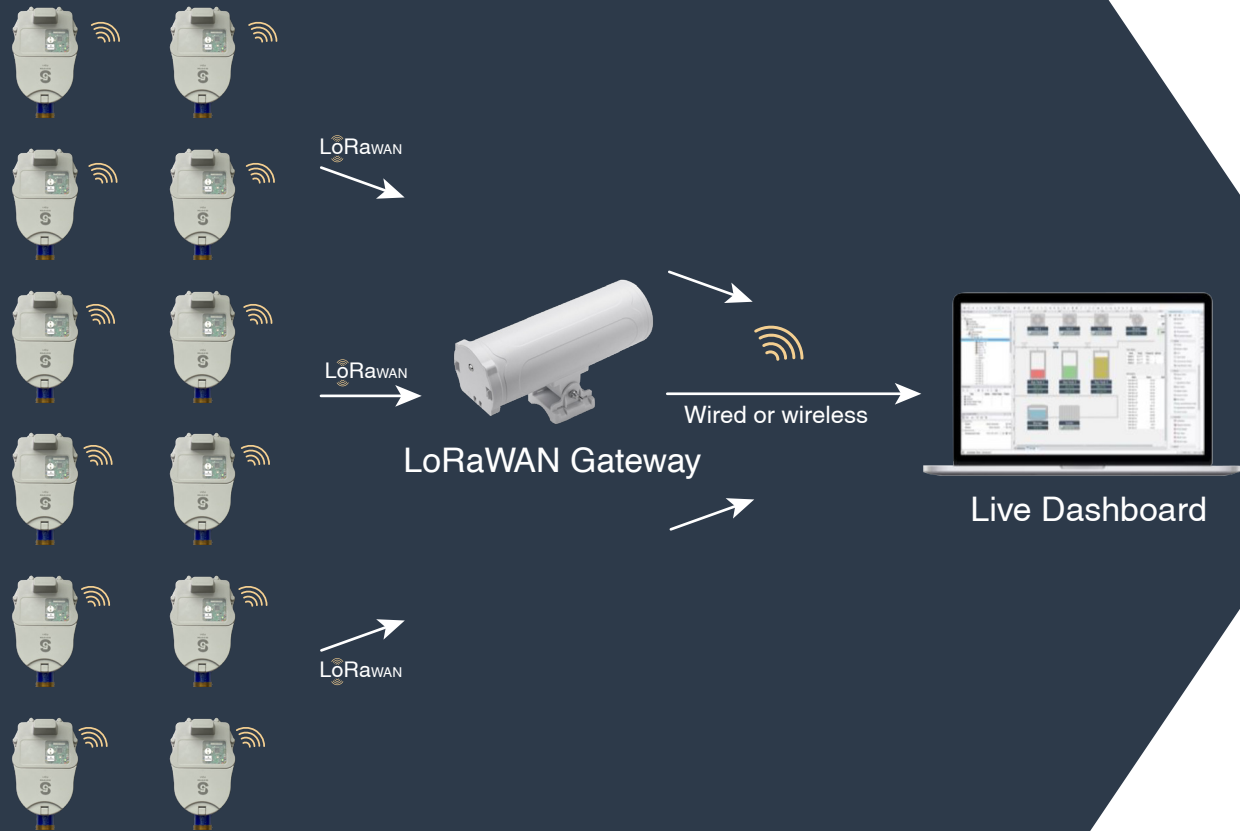
The meter reading process is very time consuming and can stretch over days.

Human error in noting down consumption values results in incorrect bills.

Cut down costs and time associated with physical meter reading.



Solution Architecture



- Removing the need for physical meter reading and opportunity for human error with use of NB-IoT or LoRaWAN.
- LoRaWAN water meter rely on LoRaWAN gateway for transmission of data.
- NB-IoT does not require a gateway as long as it is within the coverage of LTE NETWORK.



Solution Features:

- Unlimited number of Water meters and distance coverage.
- 10 years of battery life.
- Full control over valve remotely.
- Precise real time data collection and monitoring.
- Automatic network access and intelligent frequency hopping.
- IP68 Rated.
- High accuracy measurement.

Live Dashboard:

- Get real time readings.
- Remotely control and monitor your devices such as pumps, valves, gates and sensors.
- Allow multiple users to access your data from anywhere in the world.
- Monitor environmental sensors and device locations and parameters.
- Fully customize your dashboard.
- Automatically receive SMS or email alerts based on variable thresholds on your mobile devices.



Applications:

- Home and building automation.
- Monitoring and control of water consumption for industrial applications.
- Integration with wireless alarm and security system.



 Call us to arrange a demo

 Call us to receive your commercial samples for trial



 www.s5system.com

 info@s5system.com

 08 6189 8719

 L 11 Brookfield Place 125 St Georges Tce,
Perth WA 6000

